



# The Lion of St. Mark's

JUNE 2010

## Friendship Ministry planned for July

Based upon a proposal from the Mutual Ministry Committee, the Congregation Council urges that we embark on a Friendship Ministry among our members.

The goals are to increase communication among the members, and to make sure that each person knows that he or she is loved and cared for by someone who reaches out because of the love of Jesus Christ.

At the direction of the Congregation Council, the Mutual Ministry Committee is developing a process for us to share in a process of caring for one another.

We are inviting a large number of members to visit one or two other members this summer. We are approaching about 35 members to serve as visitors because they exemplify

some of the best characteristics of such a visitor: cares for people, good listener, able to share one's faith with others, projects a positive attitude about the congregation, enthusiastic, patient, respects confidentiality, and regular in church attendance.



They will gather at 7:00 P.M. on June 27 to prepare for the task of visiting one or two persons who have been ill, some who have been drifting away from the regular common life of the church family, or who may simply be glad to hear an encouraging word.

The entire congregation is invited to pray for the success of this venture; to pray for the visitors as well as for those who may be visited.

It is always a good time for such communication as we remember scripture's encouraging word:

*God will equip you with all you need for doing his will. -Heb. 13:20-21.*

# INDEX & COUNCIL UPDATE

## Inside This Issue:

Friendship Ministry Planned for July.....	1
Officer & Staff Contact Information.....	2
Council Notes.....	2
Parish Register.....	2
Attention Everyone! Please Read This!.....	3
July 4th Celebration!.....	3
Family Promise Hosting.....	4
Family Promise Training Scheduled.....	4
Food Pantry Collection.....	4
School Kit Tote Bags.....	5
ELCA, Synod & West Branch News.....	6
News from the Pews.....	7
United Churches of Lycoming County.....	7
Juneteenth Celebration in Brandon Park.....	7
In the Skin of the Poor.....	8
Friday Fun Night.....	9
Thrivent Builds.....	9
Congratulations Graduates!.....	9
VBS High Seas Expedition!.....	10
Grand Slam Parade Float.....	10
St. Mark's Summer Playgroup.....	11
Children's Church.....	11
Baccalaureate Service.....	11
St. Mark's Summer Choir Camp.....	12
Special Thank You Notes.....	13
Sunday School Closing Program.....	13
Birthdays and Anniversaries.....	14
Family Handbells Knoebel's Picnic.....	14
Health, Healing and Wholeness.....	15
Special Concerns List.....	16
Telephone & E-Mail listing of Staff, Council, Committee Chairs, Ministry Leaders & Volunteers ..	17
June Calendar.....	18
Annual Church Picnic.....	19
Annual Church Picnic.....	cover



## Council Notes

The Congregation Council met in regular session on May 17 in the Crossways Room.

- The Council:
- ◆ elected officers for the program year: Gary Weber, President; Todd Smith, Vice President; Jane Zimmerer, Secretary, Beth Shafranko, Assistant Secretary, Ken Shafranko, Treasurer; Jackie Kinney, Assistant Secretary; Brenda Bittner, Assistant Treasurer.
  - ◆ received the regular reports of the Pastor, officers, and Committees.
  - ◆ adopted an alcohol use policy for special social events at the church.
  - ◆ adopted a continuing resolution to gradually reduce the size of the Council from its present authorized size of 15 down to 12.
  - ◆ elected Dinah Labenberg as a delegate to the Annual Synod Assembly in June at Susquehanna University, joining Todd Smith and Pastor Elkin.
  - ◆ elected Barbara Thomas, Megan Eppeleman, and Carl Hieber to serve as the Auditing Committee for a three-year term, with Barbara Thomas as Chair.
  - ◆ concluded by joining in Prayer at the Close of the Day in the Chapel.

Next gathering: June 21, 2010.

## Parish Register

- ◆ Pastor Elkin officiated at the funeral for Lois Graybill on May 12, 2010 from the Allen & Redmond Home with burial in Greenlawn Memorial Park.
- ◆ Pastor Elkin officiated at the wedding service of Sandrina Gusmerotti and Garth Womer on Saturday, May 22, 2010 in the Nave, with reception at the Williamsport Country Club.

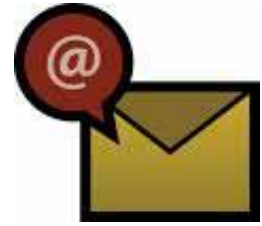
## Staff & Officers Contact Information

Church Office	323-4619	stmarks@stmarkswilliamsport.org	Church fax number	323-2452
The Reverend Kenneth Elkin, Pastor		pastor@stmarkswilliamsport.org	Pastor's Home Phone	323-7367
Dick Lakey, Director of Music		rlakey@stmarkswilliamsport.org	Website: stmarkswilliamsport.org	
Bernadette Jones, Christian Education		bjones@stmarkswilliamsport.org	Gary Weber, President	322-7149
Michele Owen, Christian Education		mowen@stmarkswilliamsport.org	Todd Smith, Vice-President	220-1350
Susan M-Smith, Parish Secretary		smsmith@stmarkswilliamsport.org	Jane Zimmerer, Secretary	433-3324
Richard Wagner, Financial Secretary		rwagner@stmarkswilliamsport.org	Ken Shafranko, Treasurer	322-6005
Lou DeSeau, Environmental Services		ldeseau@stmarkswilliamsport.org	Kathy Eshelman, Stephen Ministry	323-1992

## Attention Everyone! Please Read This!



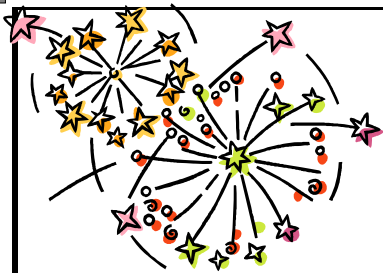
At the back of the newsletter,  
**printed on pages 17 & 18**  
 is the new listing of  
**phone numbers & email addresses**  
 for Staff, Council Members,



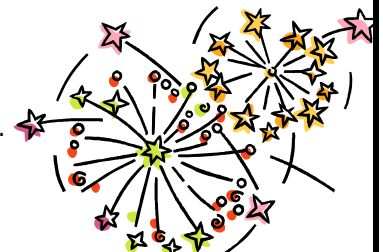
Committee Chairs, Ministry Leaders and Other Volunteers.

**Please tear it out, keep it where you can find it &  
 use it!**

## July Fourth Celebration



It is time to begin planning for our annual July Fourth celebration on our front lawn. Last year we welcomed more than 300 people to St. Mark's. To be ready for a big crowd again this year the Social Ministry Committee needs donations of:



- ξ bags of popcorn
- ξ containers of lemonade and ice tea mix
- ξ two-liter bottles of soda in all flavors, both regular and diet
- ξ bottled water in 8 oz. and 16 oz. bottles (We used ten cases last year.)
- ξ snack size bags of chips, pretzels, and fruit snacks
- ξ bags of Tootsie Rolls, Dum-Dum suckers, Smarties, and bubble gum
- ξ boxes of snack size plastic bags
- ξ bottles of ketchup, mustard and jars of sweet pickle relish
- ξ small prizes and trinkets
- ξ money to offset the cost of paper products, hotdogs, rolls, popcorn, oil, ice and other trinkets.

Donations of these items can be placed in the Narthex. Checks may be made payable to St. Mark's earmarked for July Fourth. Volunteers are also needed to set up, serve, and clean up this event. Please see the sign-up sheets in the Narthex or speak with Becky Miller Pryor.

## Christian Service Opportunities

### Hosting for Family Promise

St. Mark's was the first congregation to offer shelter to families experiencing a housing crisis. We prepared bedrooms and set-up Fellowship Hall for meals and activities. But during that first week no families stayed with us. The first family in the program spent a week at Messiah Lutheran. Due to a scheduling conflict this family is now at St. Mark's through June 6, 2010.



Jane Zimmerer and Becky Miller Pryor wish to thank the congregation and all the volunteers who donated their time, hosting supplies, food, and money to make this week possible. Continue to keep this family and Family Promise in your prayers.

**Our next opportunity to assist families experiencing a housing crisis will be August 15, 2010 – August 22, 2010.**

### More Volunteers Needed

Jane Zimmerer and Becky Miller Pryor are looking for additional volunteers to assist with hosting at St. Mark's. More volunteers give us more flexibility in scheduling. Please consider joining in this important outreach to families in need. The first step to volunteering is to enroll in a training session with Family Promise Executive Director, Melissa Magargle.

Training sessions are approximately 2 ½ hours in length and are scheduled as follows.



- Tuesday June 1, 2010 at St. Ann's RCC at 6:30 PM.
- Monday, June 7, 2010 at St. Paul-Calvary UMC at 4:00 PM.
- Wednesday, June 9, 2010 at St. Ann's RCC at 6:30 PM.
- Thursday, June 17, 2010 at St. Paul-Calvary UMC at 1:00 PM.

Please register with Melissa Magargle by telephoning the Day Center at 570-567-7103 or by emailing her at [mmagargle@gmail.com](mailto:mmagargle@gmail.com).

### No Summer Vacation from Hunger

For families experiencing a financial crisis, summer time can be an added strain with the need for additional food to feed a family. With children no longer in school, additional breakfast and lunch items are needed. Please help the Social Ministry Committee ease this burden by donating non-perishable food items to the United Churches Food Pantry. Plastic grocery bags will be available after each service on June 6 and June 13. Please return these bags with your donations by Sunday, June 20, 2010. Thank you for any help you can give.



## Christian Service Opportunities

### SPREAD THE WORD! SCHOOL BAGS,

made by the Women of St. Mark's,  
will be in the Narthex during June.

Please take one, or more,  
and fill them with the items requested.

At the end of the summer  
they will be sent to children in need  
because of natural or man-made disasters.

#### Each kit will need:

- ◆ Notebooks approx. 8.5" x 11" totaling 150-200 sheets  
(3 of the 70-sheet notebooks are preferred)  
(no loose-leaf/binder sheets)
  - ◆ 1 pair blunt scissors (metal blades)
    - ◆ 1 ruler (12" or 30 cm)
    - ◆ 1 pencil sharpener
  - ◆ 6 unsharpened pencils w/erasers
    - ◆ 1 eraser approx. - 2 1/2" long
  - ◆ 12 sheets construction paper
    - ◆ 1 box crayons (16 or 24)



How do you define "compassion"?

According to Wikipedia,

"compassion" means "to suffer together with".

Sympathy for the suffering of others  
is one of the greatest of virtues.

Won't you define your compassion  
by filling a School Kit?

Put your faith into action!

## ELCA, Synod & West Branch News

### **Domestic Hunger Grant Applications Now Available**

Congregations with hunger-related outreach ministries are encouraged to apply for a 2011 domestic hunger grant supported by ELCA World Hunger. Application and criteria can be found online now at <http://www.elca.org/domestichungergrants>. In 2009, twelve Pennsylvania congregations received grants of \$2,000 to \$4,000 in support of development and relief projects, including the St. Paul's Lutheran Food Bank in Mill Hall, PA. All applications must be postmarked by the application deadline of July 9, 2010.

### **The Morally Divided Body: Ethical Disagreement and the Disunity of the Church: June 14-16, 2010**

This is an ecumenical conference for clergy and laity sponsored by the Center for Catholic and Evangelical Theology. It will be held Monday evening, June 14, through Wednesday noon, June 16, 2010, at Loyola University, Baltimore, MD. While doctrinal issues have often in the past been the most ecumenically neuralgic topics, increasingly today ethical issues - abortion and homosexuality most prominently - have become a focus of difference between the churches and of potentially splintering debate within churches. These issues are more laden with emotion than many traditional doctrinal disputes, but ecumenical discussions have yet to address them in detail. We have little sense of just when and how ethical disputes rightly impact communion within and among the churches. When can we live together with difference over such matters and when does unity in Christ require common teaching? These questions will be addressed from a variety of perspectives. Accommodations will be available on the Loyola Campus. Conference cost (including banquet): \$210; reduced price for early registrations, retired clergy (\$175), and students (\$95). For more information, contact Michael Root at 803-735-1178 or [mroot1@sc.rr.com](mailto:mroot1@sc.rr.com). Online registration at <http://www.acteva.com/go/ccet>. More information and mail-in registration at <http://www.e-ccet.org>.

### **Seminary Sampler for High School Youth: June and July 2010**

Trinity Lutheran Seminary in Columbus, OH, invites high school youth who have completed sophomore, junior, or senior year to come to the seminary for three weeks in June or July to explore vocations, think theologically, participate in service projects, shadow mentors, and make friends with Jesus-loving youth from around the country.

If you or someone you know would be interested in this unique experience, check out the website <http://www.summersampler.com> and watch a short video about the program. You'll be glad you did! For more information, contact Pastor Ruth Fortis, Director at [rfortis@trinitylutheranseminary.edu](mailto:rfortis@trinitylutheranseminary.edu)

### **USSWO 23<sup>rd</sup> Annual Convention: July 24, 2010**

The Upper Susquehanna Synodical Women's Organization Annual Convention will be held on Saturday, July 24, 2010, at the Evergreen Center at Camp Mount Luther, 355 Mt. Luther Lane, Mifflinburg. Registration is from 7:30-8:30 a.m. The theme is "Renew and Rejoice," focusing on the following scripture passages: Romans 5:1-5; 12:1-2 and Philippians 4:4-7. Bible Study Leader is Pastor Erin Bovendam and the presiding minister for Holy Communion will be Pastor Miriam Nicholson. Workshop presentations include yoga. Registration deadline is June 21, 2010. Nominations are needed for three board positions and three delegates to the 8<sup>th</sup> Triennial Convention on July 12-14, 2011, in Spokane, Washington.

### **Camp Evergreen: July 30-August 1, 2010**

Diakon's Deb Best reports: Mark your calendars for Camp Evergreen, a Children's Bereavement Program, July 30-August 1, 2010. This special camp for children and teens that have experienced a death of a loved one is free of charge for all participants. The camp is an opportunity for youth ages 8-16 years to learn they are not alone in their feelings of confusion, loss, and grief. A staff of professional and trained volunteers fosters an atmosphere of fun and friendship. Registration deadline is July 9. There is a new site for Camp Evergreen 2010: the grounds of Valley Youth House-Camp Fowler, Orefield, PA. The site includes a therapeutic adventure course, heated pool, and beautiful wooded setting. The 43-acre facility sits on the banks of the Jordan Creek, northwest of Allentown. Call 1-877-438-5311 for more information or registration materials.

# News from the Pews

Wedding bells rang in May for **April Hartzel**, daughter of **Cindy Hartzel** and granddaughter of **Bob and Aletha Swartz**. April became the bride of Daniel Lewis on May 15. Love and best wishes to the happy couple.

**Janelle Lukens** continues to make a name for herself in Division 1 collegiate softball. After playing for two seasons as a preferred walk-on at Penn State, she transferred to Delaware State last fall and has quickly established herself as one of the premier players in the Mid-Eastern Athletic Conference, starting all 42 games at first base and hitting .330 with nine doubles, two home runs, 29 RBI and 24 runs scored. Janelle is the daughter of **Randy and Jeannette Lukens** and the niece of **Kirk and Michelle Owen**. Congratulations to Janelle and her proud family!

**Christina Comini** was pictured in the local newspaper with the supplies she donated to the local Lycoming County SPCA received at her birthday party. She is an active volunteer at the shelter. Good work, Christina!

Each month at Lycoming Valley Middle School, a group of students are recognized for their effort and responsibility with the Pioneer Pride Award, recognizing them for consistent effort and responsibility. Our own **Theoron Hershey** was part of that special group!

Lots of graduations to come in the next few weeks, please let me know so your own special graduates are remembered!  
 ~ **Joyce Anne Hershber-**

## United Churches of Lycoming County



### A 24 hour Devotion Line

is a way for everyone in our community to have "A Closer Walk With God". Devotions are three minutes or less and change daily and at least once on the weekend. Devotionalists change weekly. The phone number is **570-322-5762**.



### FOOD PANTRY NEEDS

These are the items that are currently needed:

- |                   |                       |
|-------------------|-----------------------|
| oodles of noodles | canned fruit          |
| coffee            | powdered drink mixes  |
| saltine crackers  | cake mix & frosting   |
| tea bags          | pancake mix & syrup   |
| spaghetti Sauce   | oatmeal packets       |
| cereals           | jello & pudding mixes |
| pasta             | ketchup & mustard     |
|                   | summer treat for kids |

Your donations are best brought Monday mornings from 9:30 - Noon. Persons needing food should call and leave their name and number on the answering machine. Appointments to receive food are on Tuesdays and Thursdays from 10 am - 3 pm and when necessary at other times as well. Gail Burkhart is the UCLC Food Pantry Coordinator and may be reached at 322-1657.

# JUNETEENTH

11th Annual Celebration  
 Saturday, June 19 from 1- 5 p.m.  
 Brandon Park, Williamsport



This event commemorates emancipation - the end of slavery in the United States. From its Galveston, Texas origin in 1965 this observance of June 19th as the African American Emancipation Day has spread across the United States.

It is a time of reflection and rejoicing which emphasizes African American education and achievement. There will be a Children's Carnival, Pony Rides, a Petting Zoo, Genealogy Advice, a Gifted Youth Art Exhibit, the Honoring of Dr. Mamie Diggs' Contribution and Julia C. Collins Contribution, C C (Lady) Clowns, Vendors and more.

## *From the Shepherd of the Streets*

### *In the Skin of the Poor*

by J. Morris Smith, Th.D.    Contact at: 322-6538

Most all who read this could not be poor. We have three things that sustain our way of life that the poor do not have, or have lost, or have rejected at some time or other. We have PEOPLE-family, friends, church, colleagues. These create an interchange of care. If my house were to burn down today, by nightfall I would have several offers to stay until arrangements could be made.

We have EDUCATION-we have been taught by caring people, both formally and by traditional training, caring discipline and the wisdom of God. In the process, most of us have developed some kind of skill which fits into the social and economic strata of living in a capitalistic society. We have CONNECTION and have accepted the fact that living in a human community takes a sense of justice, a willing spirit to conform to the mores and standards of human comportment.

For the poor these are not available. A capitalistic society judges by the standard of money. Lack of education, insufficient language and math skills, defective rationale, unguided compliance, lack of accommodation, ignorance of consequences due to unlearned rationale are the ways of the poor and places the poor in a class outside the accepted network used by the rest of the community.

The poor person is often raised in an atmosphere that produces the typical "poor person" who stands out in the crowd. If not raised that way, poor choices, disabilities, and rebellion have produced that outcome.

The poor person is often the object of blame, judged by appearance and performance to be lazy (not willing to improve himself), hazy (on drugs or alcohol), or crazy (mentally ill). The poor person is an exposed person-the way of life is obvious, very little privacy, frequenting places that feed and help only the poor. The poor person is deprived of the basics of social living: cleanliness, enough sleep, proper nutrition and is vulnerable to constant illness by weather and unsanitary living conditions. The poor person is restricted by the lack of choices (often the food from food pantries is low in vitality and high in starch and sugar), with no options or alternatives, (clothing is often pre-worn and "the latest thing" five years ago). The poor person is harassed: the first suspected by the law, distrusted in stores, disbelieved and must prove everything if applying for help, often evicted because of failure to pay the inflated price of rentals, subject to utility shut-off for failure to pay those inflated prices, too, always having to show their I.D. to get anything or anywhere. The poor person lives in a sense of rejection because of these things, but also because people distance themselves from them on the job (for theirs is often the lowest and least enumerated), in public restrooms, in grocery stores, on the street, and, I hate to say it, in church.

The outcome of the life of the poor is a person who is angry in a world of alienation. Anger might show itself in aggressive ways, but most often in the way a poor person develops survival strategies: selfishness, denial, and callousness (the walls of defense for a broken spirit). Overtly this leaves a trail of lack of respect for person or property, inhibition that looks like belligerence, retarded human interaction, lack of desire, poor reasoning, and lack of integrity (survival strategies of dishonesty and misrepresentation).

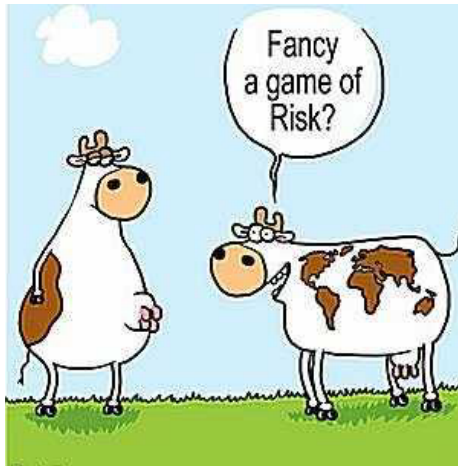
To help the poor, therefore, one must be willing to step into this strange world, to give attention, to touch, to learn the language, smell the smells. That is the mandate of Jesus- to help the poor. When we do, we find that we are poor-poor in love, joy, patience, kindness, generosity, faithfulness, gentleness, and self-control, which happens to be very fruit the Holy Spirit desires to produce in us (Galatians 5:22-23).

We so appreciate all you who step forward to help the poor by providing hygiene items, bedding, and baby needs. We appreciate the monetary contributions to fund our general budget to keep our ministry open, and the donations for discretionary and prescription funds. The list of hygiene items (which often are depleted in the summer) are: (regular sizes please...)

<i>Deodorant</i>	<i>Toothpaste and Toothbrushes</i>	<i>Soap</i>	<i>Shaving Cream and Razors</i>
<i>Tissues</i>	<i>Shampoo and Conditioner</i>	<i>Toilet Paper</i>	<i>Women's Hygiene Products</i>
<i>Combs</i>	<i>Towels and Wash Cloths</i>	<i>Baby Diapers</i>	<i>Baby Shampoo, Powder, Oil</i>
<i>Baby Q-Tips</i>	<i>Baby Wipes</i>		



# YOUTH & FAMILY MINISTRY



**FRIDAY FUN NIGHT**  
NO EXCUSES! COME JOIN THE FUN!!!

**June 25th 6:00 PM**

TRANSPORTATION PROVIDED!  
CALL 323-4619

Once again, the Lutheran churches in the area come together to build a home for Habitat for Humanity. At various times during the year, folks of all skill levels are welcome to join in the effort by actively helping in the construction/finishing or providing meals at the work site.



The Thrivent Builds home is taking shape! The second floor walls are on and the trusses will be set in the last week of May/beginning of June, thanks to everyone who has been able to help! We have had a cancellation for Saturday June 12<sup>th</sup>, and we are currently looking for a group of 10 who can help with framing/roofing.

Anyone interested in participating in this year's build should contact Todd Smith at 220-1350 or [tr.smith@us.army.mil](mailto:tr.smith@us.army.mil).

## Congratulations, Graduates!!



*"What we are is God's gift to us. What we become is our gift to God."*  
- Eleanor Powell

High school: Declan Jones



IF WE OVERLOOKED ANYONE, IT WAS UNINTENTIONAL AND WE APOLOGIZE. PLEASE PROVIDE US WITH THAT INFORMATION AND WE WILL PRINT IT NEXT MONTH. AGAIN, WE ARE SORRY FOR ANY OMISSIONS.

## YOUTH & FAMILY MINISTRY



**AHOY, MATES! IT'S HERE! IT'S NOW!**

**ARE YOU REGISTERED?**

**HAVE YOU VOLUNTEERED?**

**We set sail for adventure and discovery of our selves and our faith on Sunday evening, June 13.**

**The evenings begin promptly at 6:30 with dinner (serving will end at 10 minutes before the hour). Then we weigh anchor at 6:00, setting forth on our HIGH SEAS EXPEDITION.**

**It's not too late to sign on as a crew member-so please join us!**

**CREW TRAINING IS MONDAY, JUNE 7, at 6:30 PM.**

**If you are available during the week of June 7, final set-up will be taking place and we can use your help! Also, we still need rope (not plastic or nylon), if you have some.**

## DO we want to enter a float in the Grand Slam Parade on August 19?

To say the planning committee meeting on May 24 was poorly attended would be an understatement. If we are to do this again, there is much to be decided: theme, materials and, most importantly, **DO WE HAVE A TRAILER?**

We have a truck available to pull the float if we have one to pull! We would need the trailer to be in our parking lot by Tuesday evening, August 18. Can anyone help out with this? If so, please call the office!

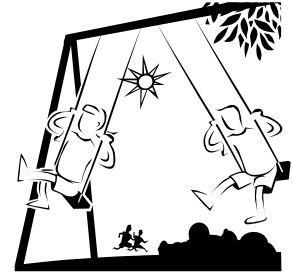
A **second meeting** will be held on **Monday, June 21, at 6:30.** We need your support and ideas!



## YOUTH & FAMILY MINISTRY

### ST. MARK'S SUMMER PLAYGROUP

Summer is upon us! Grab your calendar and pencil in the following dates for some Summer Fun with the kids. If time permits, we'd love for you to join us in socializing, snacking and tiring out the kids!!



Sun.-Thurs., June 13-17

5:30-8:15 p.m.

High Seas Expedition VBS

Wednesday, July 7

10:00 a.m.

Bruce Henry Park

Wednesday, August 4

10:00 a.m.

Bruce Henry Park

Bring a lunch in both July and August and we'll enjoy a picnic together!

If you have any questions or need directions,

please call Vicki Haussmann at 320-0561.

Hope to see you there!

#### Children's Church

The last children's service of this school year was held on Sunday, May 9. Thank you to all those who helped make all the services this year so wonderful: readers, acolytes, ushers, greeters, those who volunteered during the sermon, Mrs. Elkin, Mrs. Haussmann and Mrs. Hershberger for the music, Mr. DeSeau for setting up for us, Pastor Elkin for his knowledge, the adult ushers who "cued" us for when it was time to go to the Nave, and all those who attended.

Thank you, thank you!! We couldn't have done it without you!!!



#### Baccalaureate service



In conjunction with the WAHS commencement committee, St. Mark's will be hosting an Ecumenical Baccalaureate Service on **Sunday, June 6, at 7:00 pm.** The service is planned by Pastor Elkin and the seniors from the high school, who will participate with the readings and sermon.

The high school Brass Ensemble will perform a Haydn Minuet and "Amazing Grace."

Seniors from other schools and all are welcome to join us in the nave that evening.

## YOUTH & FAMILY MINISTRY

# St. Mark's Summer Choir Camp

**"There's no place like home..."**

Unless, of course, you're at  
St. Mark's Summer Choir Camp!

Join us for a week of fun, fellowship & music  
as we rehearse a special presentation of:

# The Wizard of Oz

**WHEN: SUNDAY, AUG. 1, thru SATURDAY, AUG. 7**  
(PERFORMANCE SATURDAY EVENING)

**WHERE: ST. MARK'S FELLOWSHIP HALL**

**WHO: YOU!!** We need (in addition to the main characters): Munchkins, citizens of Oz, flying monkeys, soldiers, adult choir members, costumers, set artists, cooks, audience members and more!

**WHY: BECAUSE IT'S BUNCHES OF FUN!**

***PLEASE LET DICK LAKEY OR BERNADETTE JONES  
KNOW OF YOUR INTEREST!***

As in the past, we'll begin at 6:00 p.m. on Sunday, August 1, right after a light supper beginning promptly at 5:30. We will then meet every evening through that week, following the same schedule: meal at 5:30, rehearse at 6:00. Saturday's rehearsal is scheduled for 9:00 a.m. Our big (& only) performance will take place after a pot-luck supper on Saturday evening (the 7th).



## Thank You! Thank You! Thank You! Thank You!

Dear St. Marks,

Thank you for the wonderful meals you cooked for the Family Promise Training.

Donna Maxwell, Secretary

Dear St. Mark's,

Thank you for your contribution toward the Food Pantry. Your ministry has helped us meet a very real need among our community and in our county. We remember the Food Pantry began at St. Mark's!

United Churches of Lycoming County

Dear Friends at St. Mark's,

Thank you so much for your gift of \$100 received on May 6, 2010 to the American Rescue Workers to help fight hunger and homelessness. It is only through the support of good friends like yourself that we are able to help those who are in need in our community. With your donation we will be able to provide hope to many individuals that have fallen on hard times. We truly appreciate your support, and pray that God will richly bless you for your faithfulness to a very worthy cause of "People Helping People."

Sincerely, Colonel & Mrs. Sam Astin, Commanding Officers

Dear People of God at St. Mark's,

On behalf of the officers, deans and all the members of the Society of the Holy Trinity, I thank you for your contribution of \$100 for our Seminarian Support Fund. Your gift will help the Society as it seeks to encourage the ongoing formation of a disciplined and faithful ministry of God's Holy Word and Sacraments in the Church and for the world. As we strive for faithfulness in ministry, we pray for your continued support. May God fill you with all faith and bless our common ministry with many fruits of His Spirit as we prepare to celebrate this Easter Season our Lord and Savior's passing through death to life for us and our salvation.

In Christ, Rev. John E. Priest, STS Secretary

Dear Friends at St. Mark's Lutheran Church,

Thank you for all your kindness, compassion and blessings. Thank you for your recent donations totaling \$187.80. As George Elliston, an American Writer wrote: "How beautiful a day can be when kindness touches it!" You have touched many in need. May the Lord's peace and blessings be upon you all.

Karen Nelson, Volunteer, Shepherd of the Streets

Michele & Bernadette thanks everyone who helped with the Sunday School program this past year: the teachers (for adult, high school, and elementary), the support staff, our accompanists, parents and students. Thank you one and all!!! You've made the year very rewarding.

Pastor Elkin & Iron Chef Williamsport 2010 Committee,

Thank you so much for your ongoing support Family Promise of Lycoming County!! This year's event was amazing. We greatly appreciate the time and effort you have put into such a successful event.

Thank You! Kristi Hammaker & FPLC Board/Network

## Sunday School Summer Programming

Our last day of regular Sunday School will be Sunday, June 6th.  
We will have our opening and then the students will have  
a movie and snack in the library.

Teachers and helpers will be recognized during both worship services that  
morning.

# Happy Birthday!

Andrew Sims 06/01  
 Evelyn Bastian 06/02  
 Kathryn Elkin 06/02  
 Grace Arner 06/03  
 Sean Jensen 06/03  
 Gail Hoffman 06/07  
 Ethan Hershey 06/08  
 Jeffrey Kneeder 06/08  
 Ryan Goertz 06/09  
 Douglas Schmitt 06/09  
 Kenneth Elkin 06/10  
 Jennifer Robertson 06/10  
 Heather Snyder 06/10  
 Robert Clokey 06/11  
 Adam Clokey 06/12  
 Alex Clokey 06/12

Doris Fortin 06/13  
 Robert McCullough 6/14  
 Julie Patrick 06/14  
 Ruth Sherlinski 06/15  
 Nathan Edler 06/17

Barbara Rechel 06/22  
 Cheryl Williams 06/22  
 Sharon Comini 06/23  
 Lillian Miller 06/23  
 Taigen Thorne 06/23  
 Tali Thorne 06/23  
 Liam Elkin 06/24  
 Robert Helm 06/24  
 Ernestine Doane 06/25  
 Megan Eppleman 06/27  
 Kristin Lynn 06/27  
 George Poliska 06/28  
 June Decker 06/29  
 Kenneth Shafranko 06/29  
 April Clark 06/30  
 Emily Welker 06/30



Norma Lehman 06/17  
 Carl Knowlden 06/18  
 Kelli Travis 06/18  
 Barbara Larson 06/19  
 Christina Raup 06/19

# Happy Anniversary!

Robert & Anne Miller 06/01  
 Shane & Amy Stugart 06/08  
 David & Carol McMorris 06/10  
 William & Carol Confer 06/14  
 Steve & Bonnie Eyer 06/18  
 Charles & Ann Kuntz 06/18  
 Gary & Shelby Weber 06/18



John & Ruth Burkholder 06/19  
 John & Brenda Bower 06/21  
 Kenneth & Donna Elkin 06/23  
 James & Susan Newcomer Sr. 06/23  
 Edgar & Donna Miller Jr. 06/25  
 Andrew & Vicki Hausmann 06/28  
 Harold & Joyce Hershberger 06/30

## Family Handbell Choir

## Knoebel's Grove Picnic

On **Tuesday, June 22**,  
 we will meet near the  
 merry-go-round at  
**Knoebel's Grove at 1:00 pm.**

Rain-date is **Thursday, June 24**,  
 at the same time, in the same place.



## HEALTH, HEALING & WHOLENESS

*"Be patient, therefore, beloved, until the coming of the Lord. The farmer waits for the precious crop from the earth, being patient with it until it receives the early and late rains. You also must be patient. Strengthen your hearts, for the coming of the Lord is near."  
(James 5:7-8, NRSV)*

It has been said that some feel closest to God when they are working the land; yet farming can be a stressful and dangerous occupation. Those of us who live in cities and towns, may take for granted the patience and sacrifice that goes into raising the produce, milk, and meat that we consume. Farming is tough, at times unpredictable labor, and the fruits of it are often undervalued on the open market.

Recently CNN Money (4/8/2010) reported that according to the Bureau of Labor Statistics, farming is in the top five most dangerous occupations in this country. Not only are there dangers in using farm machinery, but economics, and stretches of bad weather can push the farmer toward the breaking point. When money gets tight, repairs are let go, and safety equipment is not retro-fitted, putting the farmer and his/her family in further danger. Farmers are exposed to harmful chemicals and toxic fumes from silage and manure pits. They run an increased risk of malignant melanoma due to sun exposure. Yet every day – 365 days a year, they continue their work. Some say it is in their blood – it is all they have ever dreamed of doing. They see God's handiwork when they look out over their fields, crops, and their livestock.

The reality is that our farmers often keep their suffering silent, and we become willing accomplices, by adding to the financial squeeze - after all, who wants to pay an extra fifty cents for a gallon of milk or a dozen eggs? It's time we wake up!

In June of 2009, Miles Mofeit, of the Denver Times, reported that Seeds of Hope, a crisis hotline serving farm-belt states, had already logged 11,000 calls since the beginning of that year. Farm Aid's Farmer Resource Network and Hotline (1-800-FARM-AID) directs farmers to access mental health and suicide prevention assistance all over the country - depression and suicide rates among farmers have increased. What are the signs of depression? They can include: persistent sadness or anxiety; increase or decreased appetite; physical symptoms such as headaches, digestive disorders, chronic pain; irritability, restlessness; feelings of guilt/worthlessness; hopelessness; sleeping too much or too little; loss of interest in once pleasurable activity; difficulty concentrating and making decisions; thoughts of death or suicide – any of these symptoms lasting longer than two weeks need to be followed-up with a visit to a healthcare provider.

How can the farmer better manage the stress? By openly discussing or venting about problems, concerns, and fears – to friends, extended family, church members, formal and informal support networks. Recognize that he/she is never too old to learn – keeping updated on farming practices, biotechnology, and marketing - by reading, searching the internet, contacting the county or state Extension office. Make time for family – take a yearly vacation, attend children's sporting events and teacher conferences. Meet as a family on Saturday or Sunday evening, and plan out the upcoming week's work schedule. Get regular exercise, stretch and walk; listen to music; enjoy a hobby. Lower health risks by taking extra precautions to combat sun exposure – use sunscreen of at least 15 spf, wear a brimmed hat that shades eyes, ears, and neck – wear sunglasses with a UV rating of at least 100. When the tension becomes too much – get some outside help. Contact your healthcare provider, speak to your pastor or parish nurse.

What can "we", the consumer, do? As much as possible, we can buy directly from the farmer. We can listen. We can advocate, for by supporting realistic and just pricing of his/her goods and services. And we can pray – for good weather, bountiful harvest, healthy animals, much needed rest, and regularly give thanks for those who have played such a huge role in feeding us every single day.

*Summer Blessings!*

*Debbie Best, Family Life Services, Diakon Lutheran Social Ministries*

# SPECIAL CONCERNS LIST

Patricia Alexander  
505 Center St., Apt. #61  
Williamsport, PA 17701

Edith Anderson  
The Hillside, Room #109  
2725 Four Mile Drive  
Williamsport, PA 17701

Nancy Bohartz  
624 Sixth Ave.  
Williamsport, PA 17701

Elizabeth Chrisman  
690 Harding Ave.  
Williamsport, PA 17745

Bonita Crossley  
R.R. #1, Box 1001  
Hills Grove, PA 18619-9300

June Decker  
Williamsport Home, Room 413  
1900 Ravine Rd.  
Williamsport, PA 17701

Larue Dieter  
2150 Warrensville Road, Apt. 2  
Montoursville, PA 17754

Charles Ditchfield  
Valley View, Room 308  
Montoursville, PA 17754

Beatrice Doebler  
Williamsport Home, Room 208A  
1900 Ravine Rd.  
Williamsport, PA 17701

Doris Fortin  
Rose View Center  
1201 Rural Ave., Room 223B  
Williamsport, PA 17701

Lois Graybill  
Williamsport Home, Rm. #306  
1900 Ravine Rd.,  
Williamsport, PA 17701

Jean Gulliver  
Rose View Center, Rm #332  
1201 Rural Ave.  
Williamsport, PA 17701

Gail Hoffman  
153 Hampton Way  
Montoursville, PA 17754

Lift your eyes  
and look to the heavens:  
Who created all these?  
He who brings out  
the starry host one by one,  
and calls them  
each by name.  
Because of his great power  
and mighty strength,  
not one of them is missing.

Charles Homan  
2215 Warrensville Rd.  
Montoursville, PA 17754

Ardath Houser  
Muncy Valley SKU #229  
215 East Water Street  
Muncy, PA 17756

Charlotte Hughes  
140 Blueberry Lane  
Williamsport, PA 17701

Eugene & Reba Jacobs  
1306 Faxon Parkway  
Williamsport, PA 17701

Anne Miller  
947 Hepburn St.  
Williamsport, PA 17701

Lillian Miller  
2420 North Hills Drive  
Williamsport, PA 17701

Jane Oakes  
Presbyterian Home  
810 Louisa St., Apt. 204  
Williamsport, PA 17701

Mary Helen Scinicarello  
Danville St. Hosp. #311  
Danville, PA 17821

Eleanor Sobers  
425 W Highland Ave.  
S. Williamsport, PA 17702

Anna Stiadle  
1900 A. Ravine Rd., Apt. 112  
Williamsport, PA 17701

Ira Tuxford  
210 Louise Ave.  
Montgomery, PA 17752

Beulah Wrede  
Faxon Commons, Apt 305  
1804 Loyalsock Drive,  
Williamsport, PA 17701

Ralph Zeigler Sr.  
Rose View Court  
1251 Rural Ave., Apt. 209  
Williamsport, P A 17701



# Listing of Current St. Mark's Staff, Council, Chairs & Volunteers

***Please notify the Susan with any corrections or additions! Thank You!***  
**Staff**

Pastor	Rev. Kenneth Elkin	323-4619/323-7367	pastor@stmarkswilliamsport.org
Director of Music	Richard Lakey	323-4619	rlakey@stmarkswilliamsport.org
Christian Education	Bernadette Jones	323-4619	bjones@stmarkswilliamsport.org
Christian Education	Michele Owen	323-4619	mowen@stmarkswilliamsport.org
Parish Secretary	Susan Mahserjian-Smith	323-4619	smsmith@stmarkswilliamsport.org
Financial Secretary	Richard Wagner	323-4619	rwagner@stmarkswilliamsport.org
Church Sexton	Louis DeSeau	323-4619	ldeseau@stmarkswilliamsport.org
Church Website	stmarkswilliamsport.org	Church email	stmarks@stmarkswilliamsport.org
Office Number	323-4619	Fax Number	323-2452

## Council

Council President	Gary Weber	322-7149	gweber@stmarkswilliamsport.org
Council Vice-President	Todd Smith	220-1350	tr.smith@us.army.mil
Council Secretary	Jane Zimmerer	433-3324	jerer8@hotmail.com
Council Assistant Secretary	Beth Shafranko	322-6005	shafrankob@cs.net
Council Treasurer	Ken Shafranko	322-6005	shafrankok@chillitech.net
Council Assistant Treasurer	Jackie Kinney	323-5980	jskinney1@comcast.net
Council Member	Nick Buckman	323-1707	alasterb@gmail.com
Council Member	Gregg Dancho	435-2716	dancho@chillitech.net
Council Member	Ruth Pile	494-0578	
Council Member	Bob Miller	322-5825	rlmagm@aol.com
Council Member	Scott Bittner	326-0803	bitnews@comcast.net
Council Member	Bonnie Eyer	368-3636	bonnie@fisheragency.com
Council Member	Clinton Eppleman	244-1371	eppleman@lycoming.edu
Council Member	Dinah Labenberg	435-5168	xtremephilafan@aol.com
Council Member	Michele Ramsauer	368-8036	perur@comcast.net
Youth Observer			

## Chairs

Mutual Ministry	Carl Hieber	323-5921	retiredbroker@comcast.net
Worship & Music	Beth Shafranko	322-6005	shafrankob@cs.com
Social Ministry	Becky Miller-Pryor	321-9521	murphy173@verizon.net
Parish Life	Bob Jones	323-4619	bobjonessells@gmail.com
Property	Frank Doebler	326-1621	fdoebler@verizon.net
Fine Arts	Joyce Hershberger	322-0410	deermountain2@comcast.net
Little Lamb Liaison	Joyce Hershberger	322-0410	deermountain2@comcast.net
Stewardship	Ray & Cindy Huff	368-1473	rhuff@montoursville.k12.pa.us
Archives	Clinton Eppleman	244-1371	eppleman@lycoming.edu
Memorials	Carl & Beverly Hieber	323-5921	retiredbroker@comcast.net
Finance	Ken Shafranko	322-6005	shafrankok@chillitech.net
Women of ELCA	Shirley Hill	323-7546	wjh1226@verizon.net

## Listing of Current St. Mark's Staff, Council, Chairs & Volunteers

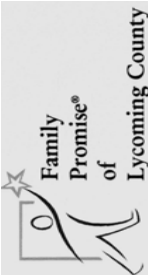






### Other Ministry Leaders

Stephen Ministry	Kathy Eshelman	220-0774	
The Way Ministry	Mel Wentzel	327-8286	tookool4school@comcast.net
Website Ministry	Gary Weber	322-7149	gweber@stmarkswilliamsport.org
Publicity	Kathy Kolb	326-7529	kathy@kolbworks.com

### Other Volunteers

Acolytes	Brittany Lynch	279-8545	brittanlytoy@hotmail.com
Nursery	Vicki Hospes	326-7318	i2luvny@verizon.net
Shut-In Mailings	Judy Fortin	323-7715	
Pew Cards/Pencils	Ernestine Doane	368-2942	
Worship Greeters 8:00 AM	Tim Maggs	322-8109	tfdjmaggs@aol.com
Worship Greeters 10:30 AM	Tim Maggs	322-8109	tfdjmaggs@aol.com
Altar Guild	Beverly Hieber	323-5921	retiredbroker@comcast.net
Flower Delivery			
Altar Flowers	Deb Maggs	322-8109	tfdjmaggs@aol.com
Greeting Card Ministry			
Lector Scheduling 8:00 AM	Grace Arner	433-3237	
Lector Scheduling 10:30 AM	Joyce Hershberger	322-0410	deermountain2@comcast.net
Communion Assistants	Carl Hieber	323-5921	retiredbroker@comcast.net
Assisting Ministers	Joyce Hershberger	322-0410	deermountain2@comcast.net
Quilt-making & Sewing	Shirley Hill	323-7546	
Hospitality 8:00 AM	Shirley Kinney	327-8917	
Hospitality 10:30 AM			
Ushers	Bud Hershberger	322-0410	deermountain2@comcast.net
Home Communion	Lois Smith	433-0183	rhsmith@suscom.net
Prayer Chain	Larue Dieter	433-3453	larud@peoplepc.com
Prayer Venture Cards	Gene Jacobs	322-0390	
Bread & Soup Ministry	Jane Kline	326-9672	janeart1@verizon.net
Family Promise	Becky Miller Pryor Jane Zimmerer	321-9523 433-3324	murphy173@verizon.net jerer8@hotmail.com
Birthday & Anniversary	Susan Mahserjian-Smith	323-4619	stmarks@stmarkswilliamsport.org
Food Service	Bob Jones	323-4619	bobjonessells@gmail.com
Transportation Requests	Bernadette Jones Michele Owen	323-4619 323-4619	bjones@stmarkswilliamsport.org mowen@stmarkswilliamsport.org
Bulletin Sponsorship	Susan Mahserjian-Smith	323-4619	stmarks@stmarkswilliamsport.org

# St. Mark's June Calendar of Events

<p><b>1 Tuesday</b>  <b>Hosting FPLC</b>                      8:00 AM City Pastors                      9:00 AM Morning Prayer</p> <p><b>2 Wednesday</b>  <b>Hosting FPLC</b>                      9:00 AM Morning Prayer                      9:20 AM Staff Meeting</p> <p><b>3 Thursday</b>  <b>Hosting FPLC</b>                      6:31 AM Men's Ministry                      8:00 AM Stephen Min. I                      9:00 AM Morning Prayer</p> <p><b>4 Friday</b>  <b>Hosting FPLC</b>                      9:00 AM Morning Prayer</p> <p><b>5 Saturday</b>  <b>Hosting FPLC</b></p> <p><b>6 Sunday</b>  <b>Pentecost II</b>                      8:00 AM Holy Communion                      9:15 AM Sunday School Closing                      10:30 AM Holy Communion                      1:00 PM Annual Picnic                      7:00 PM Baccalaureate Service</p> <p><b>7 Monday</b>                      9:00 AM Morning Prayer                      6:30 PM Property Committee                      6:30 PM VBS Crew Training</p> <p><b>8 Tuesday</b>                      9:00 AM Morning Prayer</p> <p><b>9 Wednesday</b>                      9:00 AM Morning Prayer                      9:20 AM Staff Meeting</p> <p><b>10 Thursday</b>                      6:31 AM Men's Ministry                      9:00 AM Morning Prayer</p>					
<p><b>11 Friday</b>                      9:00 AM Morning Prayer</p> <p><b>13 Sunday</b>  <b>Pentecost III</b>                      8:00 AM Holy Communion                      9:15 AM Summer Forum                      10:30 AM Holy Communion                      5:30 PM VBS</p> <p><b>14 Monday</b>                      9:00 AM Morning Prayer                      5:30 PM VBS</p> <p><b>15 Tuesday</b>                      9:00 AM Morning Prayer                      5:30 PM VBS                      6:30 PM Finance Committee (Library)</p> <p><b>16 Wednesday</b>                      9:00 AM Morning Prayer                      9:20 AM Staff Meeting                      12:00 PM Lunch 'N' Fellowship                      5:30 PM VBS</p> <p><b>17 Thursday</b>                      6:31 AM Men's Ministry                      9:00 AM Morning Prayer                      5:30 PM VBS</p> <p><b>18 Friday</b>  <b>Newsletter Deadline</b>                      USS Synod Assembly                      9:00 AM Morning Prayer</p> <p><b>19 Saturday</b>                      USS Synod Assembly                      1:00 PM Brandon Park Juneleenth Celebration</p> <p><b>20 Sunday</b>  <b>Food Pantry Collection</b>  <b>Pentecost IV</b>                      8:00 AM Holy Communion                      9:15 AM Summer Forum                      10:30 AM Holy Communion                      12:15 PM The Way Gathering</p>					
<p><b>21 Monday</b>                      9:00 AM Morning Prayer                      6:30 PM Council Mtg.                      6:30 PM Float Committee Mtg.                      7:00 PM Dog Club</p> <p><b>22 Tuesday</b>                      9:00 AM Morning Prayer                      1:00 PM Family Bells Knoebels Grove Picnic                      7:00 PM Family Promise Board</p> <p><b>23 Wednesday</b>                      9:00 AM Morning Prayer                      9:20 AM Staff Meeting                      5:00 PM FPLC - Daycenter Open House</p> <p><b>24 Thursday</b>                      6:31 AM Men's Ministry                      9:00 AM Morning Prayer</p> <p><b>25 Friday</b>                      9:00 AM Morning Prayer                      9:15 AM Lion Crew                      6:00 PM Friday Fun Night</p> <p><b>26 Saturday</b>                      9:00 AM Daniel's Closet @ Redeemer</p> <p><b>27 Sunday</b>  <b>Pentecost V</b>                      8:00 AM Holy Communion                      9:15 AM Summer Forum                      10:30 AM Holy Communion                      12:00 PM The Way - Final Gathering                      6:00 PM Teen Movie Night                      7:00 PM Friendship Ministry Meeting</p> <p><b>28 Monday</b>                      9:00 AM Morning Prayer</p> <p><b>29 Tuesday</b>                      9:00 AM Morning Prayer</p> <p><b>30 Wednesday</b>                      9:00 AM Morning Prayer                      9:20 AM Staff Meeting</p>					

**ST. MARK'S LUTHERAN CHURCH**  
**142 MARKET ST.**  
**WILLIAMSPORT, PA 17701**

Phone: 570-323-4619  
Fax: 570-323-2452

Website: <http://www.stmarkswilliamsport.org>  
Email: [stmarks@stmarkswilliamsport.org](mailto:stmarks@stmarkswilliamsport.org)

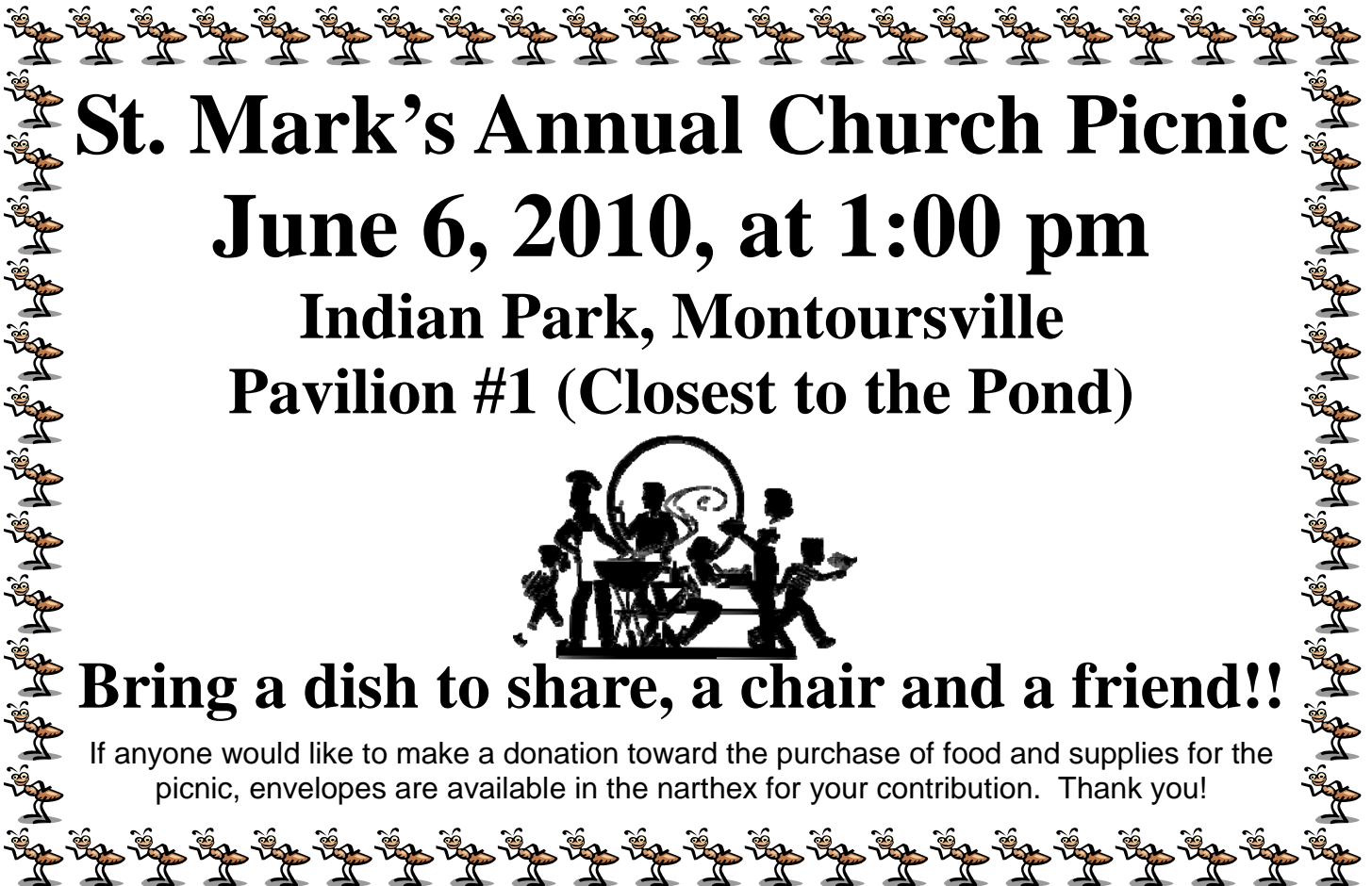


*Corrected Service Requested*

Non-Profit Organization  
U.S. POSTAGE

**PAID**

**Permit No. 257**  
Williamsport, PA 17701



**St. Mark's Annual Church Picnic**  
**June 6, 2010, at 1:00 pm**  
**Indian Park, Montoursville**  
**Pavilion #1 (Closest to the Pond)**



**Bring a dish to share, a chair and a friend!!**

If anyone would like to make a donation toward the purchase of food and supplies for the picnic, envelopes are available in the narthex for your contribution. Thank you!